

Split System Submittal Data

Indoor: **CS-XE12PKUA** Outdoor: **CU-XE12PKUA**

Wall Mounted Air Conditioners

Job Name: _____

Location: _____

Engineer: _____

Submitted to: _____

Submitted by: _____

Reference: _____

Approval: _____

Date: _____

Construction: _____

Unit#: _____

Drawing#: _____

General Data	
Power (V/P/Hz)	230/208/1/60
Circuit Ampacity (A)	15
Fuse Size, Max.(A)	20
Compressor	
	DC Twin Rotary
No. Used	1
Output Power (W)	700
Outdoor Unit	
Fan Type	Propeller
Motor Type	DC Motor (8 poles)
Output Power (W)	40
Airflow (CFM)	1555
Coil Type	
	Aluminum (Blue Coated)
Fin Type - Pipe Type	Corrugated Fin
Rows - F.P.I.	18
Face Area (sq.ft.)	5.99
Indoor Unit	
Fan type	Cross Flow
No. Speeds	5
RPM (High)	1350
Motor Output (w)	40
CFM (QLo/Lo/Me/Hi/SHi)	170/240/390/530/550
Indoor Sound Rating (Hi) (dB-A)	44
Coil Type	Aluminum Fin & Copper Tube
Fin Type - Pipe Type	Slit Plate - Inner Rifled
Rows - F.P.I.	21
Face Area (sq.ft)	2.45
Drain Connection Size (in.)	3/4
Refrigerant	
	R410A
Lbs. - R410a (Outdoor Unit)	2.54
Control	Electronic Expansion Valve
Connection	Flare
Line Length, Max (ft.)	66
Lift Difference, Max (ft.)	49
Line Size (in. O.D. Discharge)	1/4"
Line Size (in. O.D. Suction)	1/2"
Dimensions (HxWxD)	
Indoor Unit (Crated) (in.)	11-7/8"x37-13/16"x14-3/8"
Indoor Unit (Uncrated) (in.)	11-5/8"x34-9/32"x10-1/16"
Outdoor Unit (Crated) (in.)	29-11/32"x41-5/16"x18-1/8"
Outdoor Unit (Uncrated) (in.)	27-3/8"x34-15/32"x12-5/8"
Weight	
Net, Indoor (lbs.)	24



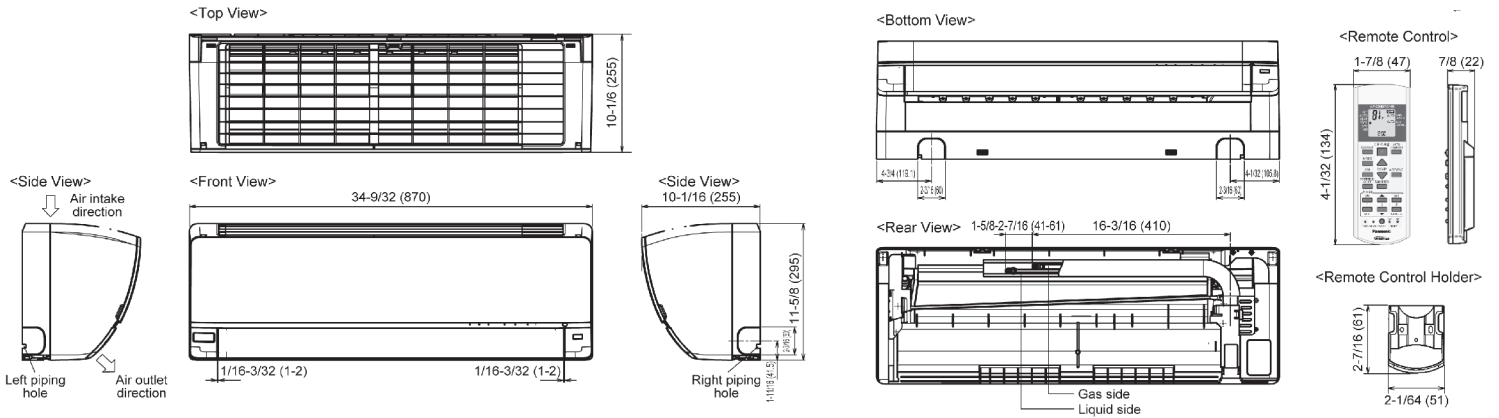
Shipping, Indoor (lbs.)	26
Net, Outdoor (lbs.)	97
Shipping, Outdoor (lbs.)	108

Performance Data @ ARI Standard Conditions (230/208V)	
Cooling	
Total Capacity (BTU/H)	11,500 (2,800-14,000)
Sensible Capacity (BTU/H)	10,120
Latent Capacity (BTU/H)	1,380
SEER	25.5
Dehumidification (Pints/H)	2.3
Amps (A)	4.2/3.8
Power Inputs (W)	800 (150-1,050)
Outdoor Sound Rating (dB-A)	49
Heating	
Total Capacity (BTU/H)	13,800 (3,000-23,000) (Max at 5F 12,500)
HSPF	12.0
Amps (A)	5.8/5.2
Power Inputs (W)	1,150 (150-2,100)
Outdoor Sound Rating (dB-A)	49

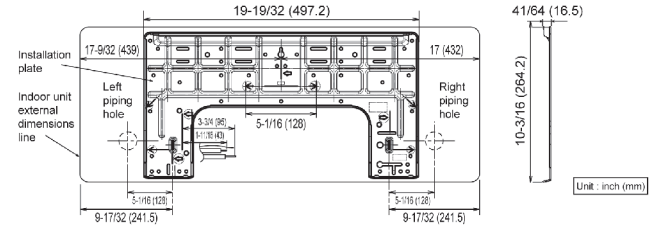
Features	
Wireless Remote Controller	Standard
Wired Remote Controller (CZ-RD516C)	Optional
Controls	Microprocessor
Remote Control	LCD Wireless Type
Temperature Control	IC Thermostat
Air Louver, Horizontal	Manual
Air Louver, Vertical	Automatic
Power Failure Automatic Restart	Built-In
Self-Diagnosis	Built-In
Air Filter	Washable, One-touch

Operating Range	Indoor Air Intake Temp	Outdoor Air Intake Temp
Cooling (Max)	90F DB/74F WB	115F DB/79F WB
Cooling (Min)	60F DB/52F WB	0F DB/-F WB
Heating (Max)	86F DB/-F WB	75F DB/64F WB
Heating (Min)	60F DB/-F WB	0F DB/-2.2F WB

Indoor Dimensions



Relative position between the indoor unit and the installation plate <Front View>



Outdoor Dimensions

